

**TM 11-6625-1711-24P-1**

---

**TECHNICAL MANUAL**

**ORGANIZATIONAL, DIRECT SUPPORT, AND GENERAL SUPPORT  
MAINTENANCE REPAIR PARTS AND SPECIAL TOOLS LISTS  
(INCLUDING DEPOT MAINTENANCE REPAIR PARTS  
AND SPECIAL TOOLS)**

**FOR**

**TEST SET, SIMULATOR AN/APM-245A  
(NSN 6625-00-164-6551)**

---

**HEADQUARTERS, DEPARTMENT OF THE ARMY**

**12 MARCH 1980**



TECHNICAL MANUAL  
No. 11-6625-1711-24P-1



HEADQUARTERS  
DEPARTMENT OF THE ARMY  
WASHINGTON, DC, 12 March 1980

ORGANIZATIONAL, DIRECT SUPPORT, AND GENERAL SUPPORT MAINTENANCE  
REPAIR PARTS AND SPECIAL TOOLS LISTS  
(INCLUDING DEPOT MAINTENANCE REPAIR PARTS AND SPECIAL TOOLS)  
FOR  
TEST SET, SIMULATOR AN/APM-245A  
(NSN 6625-00-164-6551)  
*Current as of 27 September 1979*

**REPORTING ERRORS AND RECOMMENDING IMPROVEMENTS**

**You can help improve this manual. If you find any mistakes or if you know of a way to improve the procedures, please let us know. Mail your letter, DA Form 2028 (Recommended Changes to Publications and Blank Forms), or DA Form 2028-2 located in back of this manual direct to Commander, US Army Communications and Electronics Material Readiness Command, ATTN: DRSEUME-MQ, Fort Monmouth, NJ 07703.**

**In either case a reply will be furnished direct to you.**

TABLE OF CONTENTS

		Page	Illus Figure
SECTION	I. Introduction . . . . .	1	
	II. Repair Parts List . . . . .	5	
GROUP	00 Test Set, Simulator AN/APM-245A . . . . .	5	1
	01 Test set, simulator . . . . .	7	2
	0101 Panel assembly, front . . . . .	9	3
	Panel assembly, front, parts breakdown . . . . .	13	4
	0102 Chassis, elec-mech . . . . .	17	5
	010201 Power supply, circuit card assembly . . . . .	21	6
	010202 Logic circuit card assembly . . . . .	25	7
	02 Cable assembly, power electrical . . . . .	29	8
	03 Cable assembly, radio frequency . . . . .	31	9
SECTION	III. Special tools list (Not applicable)		
	IV. National stock number and part number index . . . . .	32	

\*This manual supersedes TM 11-6625-1711-24P-1, 21 June 1974.



## SECTION I

### INTRODUCTION

---

#### 1. Scope

This manual lists spares and repair parts; special tools; special test, measurement, and diagnostic equipment (TMDE), and other special support equipment required for performance of organizational, direct support, and general support maintenance of the AN/APM-245A. It authorizes the requisitioning and issue of spares and repair parts as indicated by the source and maintenance codes.

#### 2. General

This Repair Parts and Special Tools List is divided into the following sections:

*a. Section II. Repair Parts List.* A list of spares and repair parts authorized for use in the performance of maintenance. The list also includes parts which must be removed for replacement of the authorized parts. Parts lists are composed of functional groups in numeric sequence, with the parts in each group listed in figure and item number sequence.

*b. Section III. Special Tools List.* Not applicable.

*c. Section IV. National Stock Number and Part Number Index.* A list, in National item identification number (NIIN) sequence, of all National stock numbers (NSN) appearing in the listings, followed by a list, in alphanumeric sequence, of all part numbers appearing in the listings. National stock numbers and part numbers are cross-referenced to each illustration figure and item number appearance.

#### 3. Explanation of Columns

*a. Illustration.* This column is divided as follows:

(1) *Figure number.* Indicates the figure number of the illustration on which the item is shown.

(2) *Item number.* The number used to identify item called out in the illustration.

*b. Source, Maintenance, and Recoverability (SMR) Codes.*

(1) *Source code.* Source codes indicate the manner of acquiring support items for maintenance, repair, or overhaul of end items. Source codes are

entered in the third and fourth positions of the Uniform SMR Code format as follows:

<i>Code</i>	<i>Definition</i>
PA	Item procured and stocked for anticipated or known usage.
XB	Item is not procured or stocked. If not available through salvage, requisition.
XD-A	support item that is not stocked. When required, item will be procured through normal supply channels.

#### NOTE

Cannibalization or salvage maybe used as a source of supply for any items source coded above except those coded XA and aircraft support items as restricted by AR 700-42.

(2) *Maintenance code.* Maintenance codes are assigned to indicate the levels of maintenance authorized to USE and REPAIR support items. The maintenance codes are entered in the third and fourth positions of the Uniform SMR Code format as follows:

(a) The maintenance code entered in the third position will indicate the lowest maintenance level authorized to remove, replace, and use the support item. The maintenance code entered in the fourth position will indicate one of the following levels of maintenance:

<i>Code</i>	<i>Application/Explanation</i>
O	Support item is removed, replaced, used at the organizational level.
H	Support item is removed, replaced, used at the general support level.

(b) The maintenance code entered in the fourth position indicates whether the item is to be repaired and identifies the lowest maintenance level with the capability to perform complete repair (i.e., all authorized maintenance functions). This position will contain one of the following maintenance codes:

<i>Code</i>	<i>Application/Explanation</i>
H	The lowest maintenance level capable of complete repair of the support item is the general support level.
Z	Nonreparable. No repair is authorized.

(3) *Recoverability code.* Recoverability codes are assigned to support items to indicate the disposition

action on unserviceable items. The recoverability code is entered in the fifth position of the Uniform SMR Code format as follows:

*Recoverability Code*

*Definition*

Z—Nonreparable item. When unserviceable, condemn and dispose at the level indicated in position 3.

H—Reparable item. When uneconomically reparable, condemn and dispose at the general support level.

*c. National Stock Number.* Indicates the National stock number assigned to the item and will be used for requisitioning purposes.

*d. Part Number.* Indicates the primary number used by the manufacturer (individual, company, firm, corporation, or Government activity), which controls the design and characteristics of the item by means of its engineering drawings, specifications, standards, and inspection requirements to identify an item or range of items.

#### NOTE

When a stock numbered item is requisitioned, the repair part received may have a different part number than the part being replaced.

*e. Federal Supply Code for Manufacturer (FSCM).* The FSCM is a 5-digit numeric code listed in SB 708-42 which is used to identify the manufacturer, distributor, or Government agency, etc.

*f. Description.* Indicates the Federal item name and, if required, a minimum description to identify the item.

*g. Unit of Measure (U/M).* Indicates the standard of the basic quantity of the listed item as used in performing the actual maintenance function. This measure is expressed by a two-character alphabetical abbreviation (e.g., ea, in, pr, etc). When the unit of measure differs from the unit of issue, the lowest unit of issue that will satisfy the required units of measure will be requisitioned.

*h. Quantity Incorporated in Unit.* Indicates the quantity of the item used in the breakout shown on the illustration figure, which is prepared for a functional group, subfunctional group, or an assembly.

#### 4. Special Information

The following publication pertains to the AN/APM-245A and its components:

TM 11-6625-1711-15-1, Simulator, Test Set AN/APM-245A

#### 5. How to Locate Repair Parts

*a.* When National stock number or part number is unknown.

(1) *First.* Using the table of contents, determine the functional group within which the item belongs. This is necessary since illustrations are prepared for functional groups and listings are divided into the same groups.

(2) *Second.* Find the illustration covering the functional group to which the item belongs.

(3) *Third.* Identify the item on the illustration and note the illustration figure and item number of the item.

(4) *Fourth.* Using the Repair Parts Listing, find the figure and item number noted on the illustration.

*b.* When National stock number or part number is known.

(1) *First.* Using the Index of National Stock Numbers and Part Numbers, find the pertinent National stock number or part number. This index is in NIIN sequence followed by a list of part numbers in alphameric sequence, cross-referenced to the illustration figure number and item number.

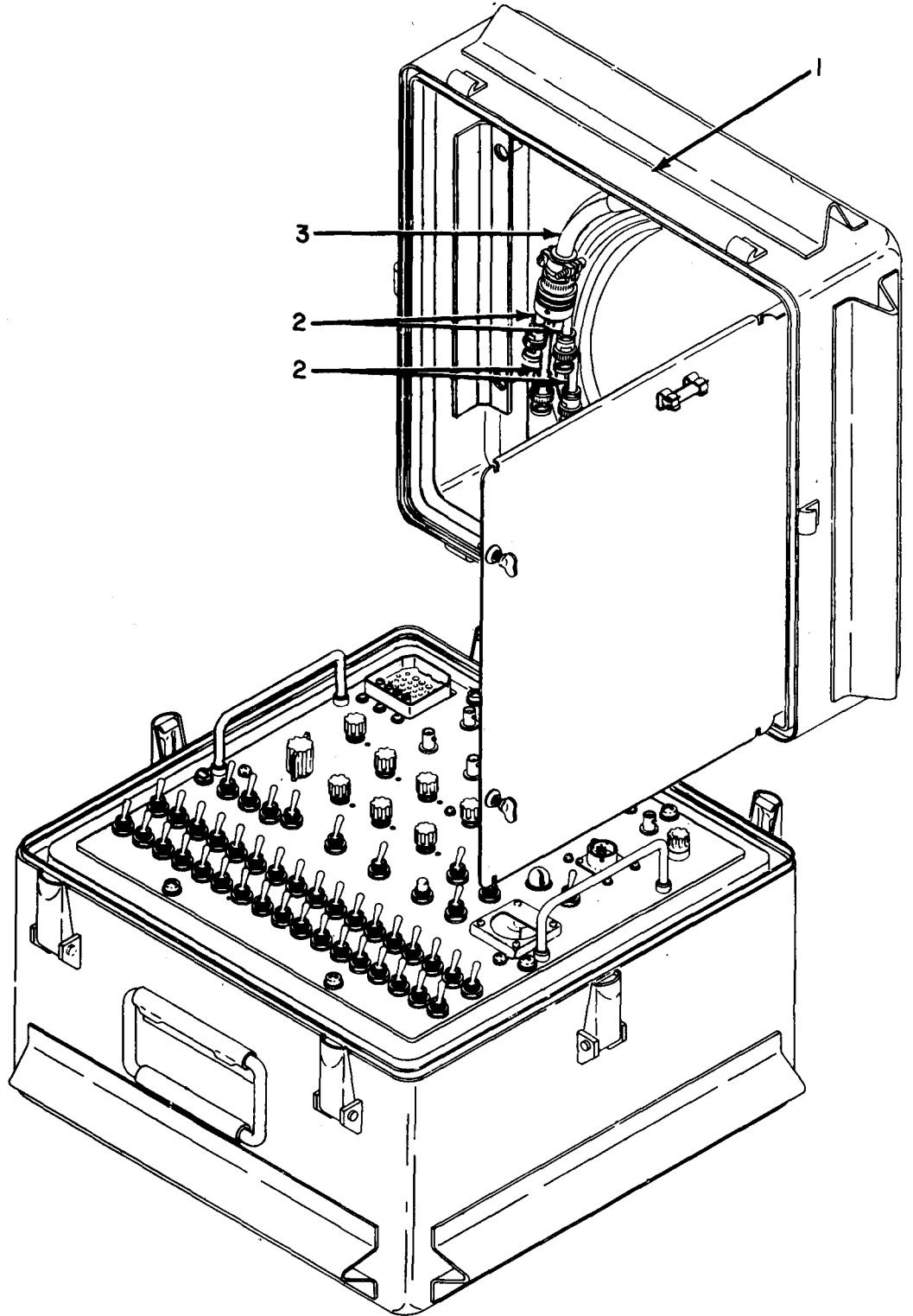
(2) *Second.* After finding the figure and item number, locate the figure and item number in the repair parts list.

#### 6. Abbreviations

Not applicable.

(Next printed page is 4)



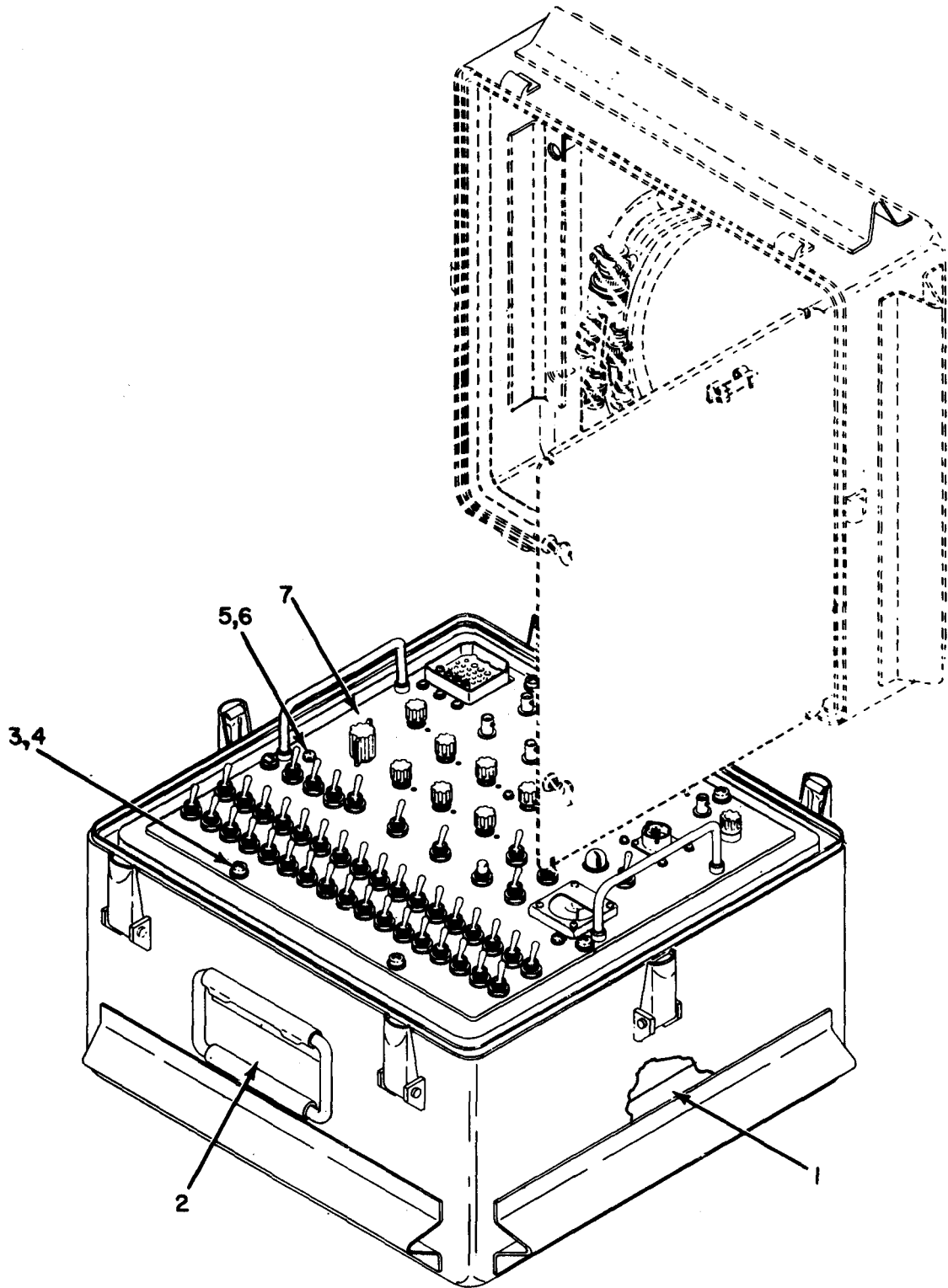


ELIHROOI

Figure 1. Test Set, Simulator AN/APM-245A.



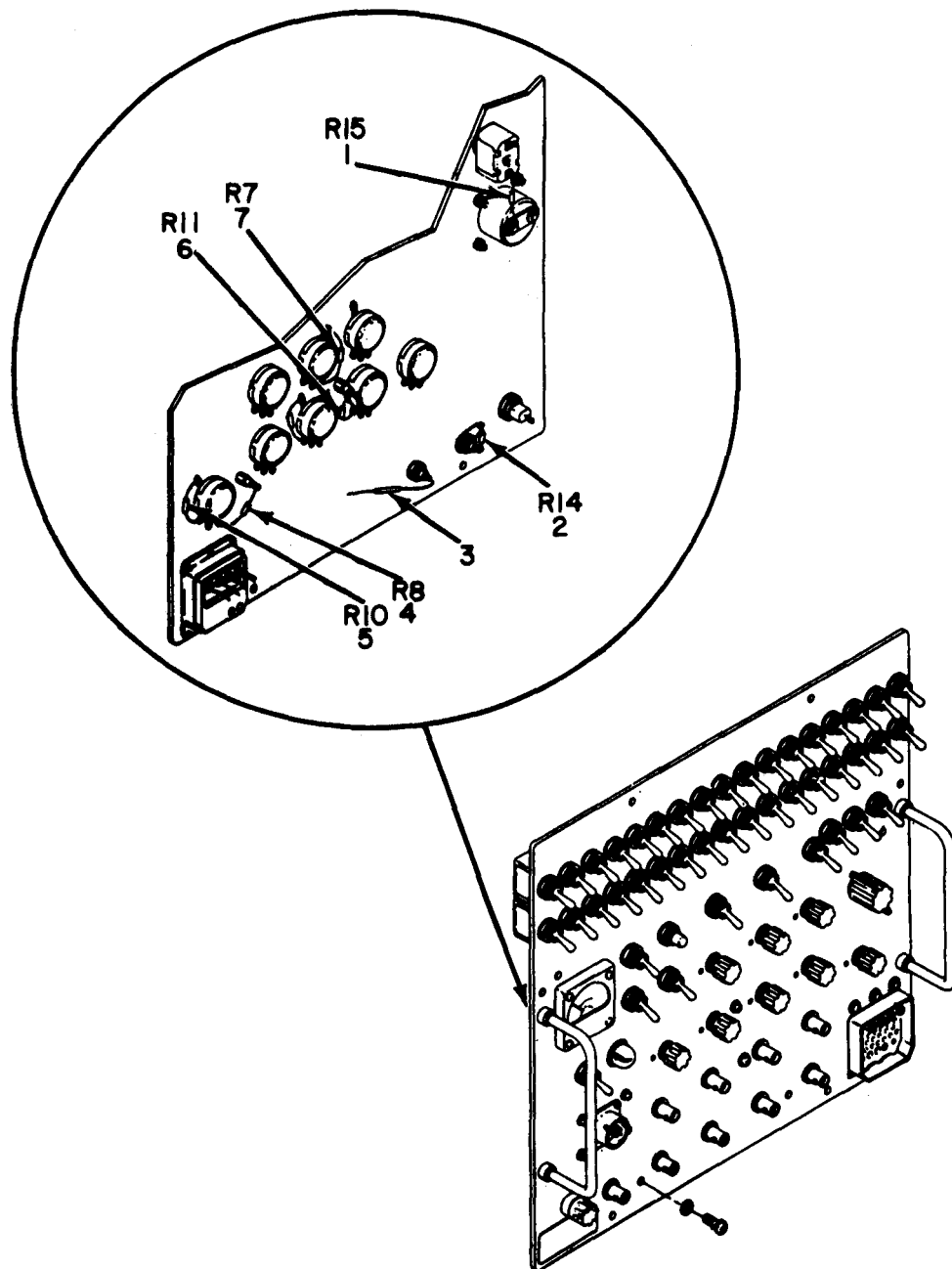
SECTION II (1) ILLUSTRATION		(2)	(3)	(4)	(5)	(6)	(7)	(8)
FIG NO	(A) ITEM NO	SMR CODE	NATIONAL STOCK NUMBER	PART NUMBER	FSCM	DESCRIPTION	USABLE ON CODE U/M	QTY INC IN UNIT
GROUP 00 TEST SET SIMULATOR AN/APM-245A								
1	1	XDHHH		121986-1	80249	TEST SET SIMULATOR	EA	1
1	2	XDOHH		117743	80249	CABLE ASSEMBLY	EA	4
1	3	XDOHH	6625-01-040-8978	117740	80249	CABLE ASSEMBLY, SPEC	EA	1



ELIHR002

Figure 2. Test Set, Simulator

SECTION II (1) ILLUSTRATION		(2)	(3)	(4)	(5)	(6)	(7)	(8)
FIG NO	(A) ITEM NO	SMR CODE	NATIONAL STOCK NUMBER	PART NUMBER	FSCM	DESCRIPTION	USABLE ON CODE U/M	QTY INC IN UNIT
GROUP 01 TEST SET, SIMULATOR								
2	1	XDHHH		202001-1	80249	CHASSI	EA	1
2	2	XDHZZ		79W17	19178	CASE, TEST SET	EA	1
2	3	PAHZZ	5305-00-059-3660	MS51958-64	96906	SCREW, MACHINE	EA	6
2	4	PAHZZ	5310-00-167-0801	AN960C10	88044	WASHER, FLAT	EA	6
2	5	PAHZZ	5305-00-470-5475	MS51958-63B	96906	SCREW, MACHINE	EA	4
2	6	PAHZZ	5310-00-160-9817	AN960XC10	88044	WASHER, FLAT	EA	4
2	7	XDHHH		121987-1	80249	PANEL ASSEMBL	EA	1

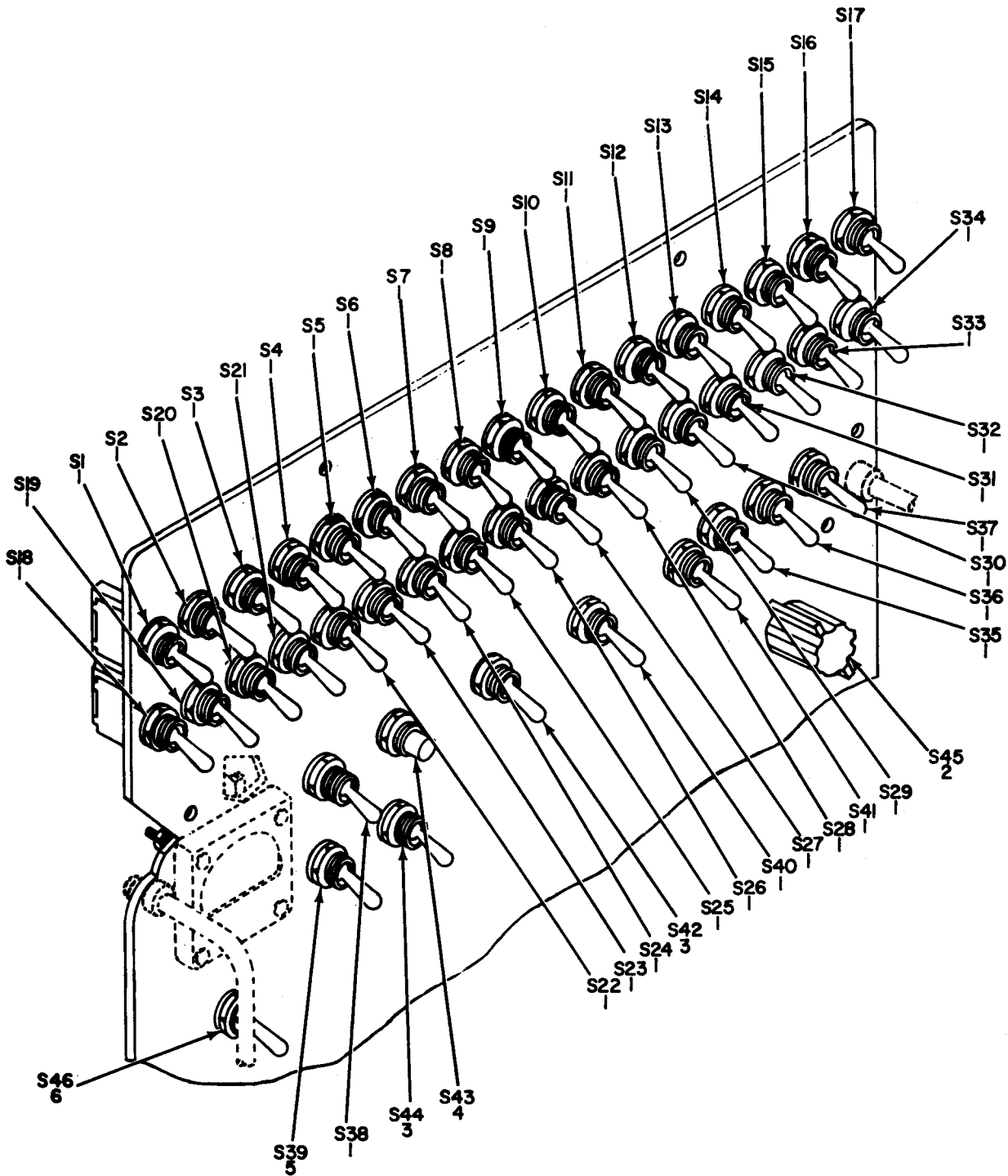


ELIHR003

Figure 3. Panel Assembly, Front.

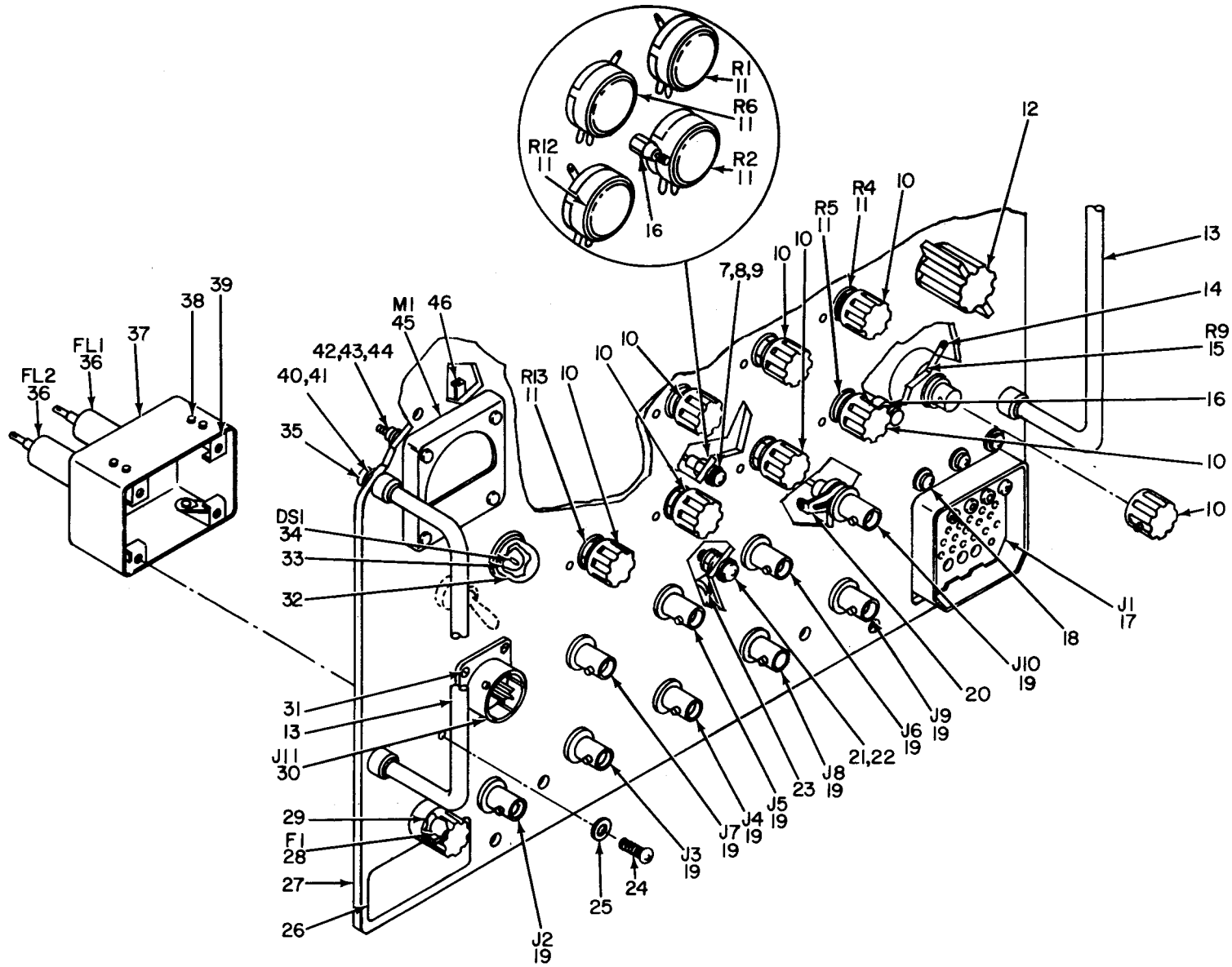
SECTION II (1) ILLUSTRATION		(2)	(3)	(4)	(5)	(6)	(7)	(8)
FIG NO	(A) ITEM NO	SMR CODE	NATIONAL STOCK NUMBER	PART NUMBER	FSCM	DESCRIPTION	USABLE ON CODE U/M	QTY INC IN UNIT
GROUP 0101 PANEL ASSEMBLY, FRONT								
3	1	PAHZZ	5905-00-171-2005	RCR20G471JS	81349	RESISTOR, FIXE	EA	1
3	2	PAHZZ	5905-00-141-1131	RCR07G910JS	81349	RESISTOR, FIXE	EA	1
3	3	PAHZZ	5940-00-920-3339	D100	06090	FERRULE, RADIO	EA	16
3	4	PAHZZ	5905-00-115-8055	RCR07G393JS	81349	RESISTOR, FIXE	EA	1
3	5	PAHZZ	5905-00-120-9152	RCR07G274JS	81349	RESISTOR, FIXE	EA	1
3	6	PAHZZ	5905-00-110-7620	RCR07G102JS	81349	RESISTOR, FIXE	EA	1
3	7	PAHZZ	5905-00-120-9154	RCR07G471JS	81349	RESISTOR, FIXE	EA	1





ELIHR005

Figure 4. Panel Assembly, Front, Parts Breakdown (Sheet 1 of 2).



ELIHR006

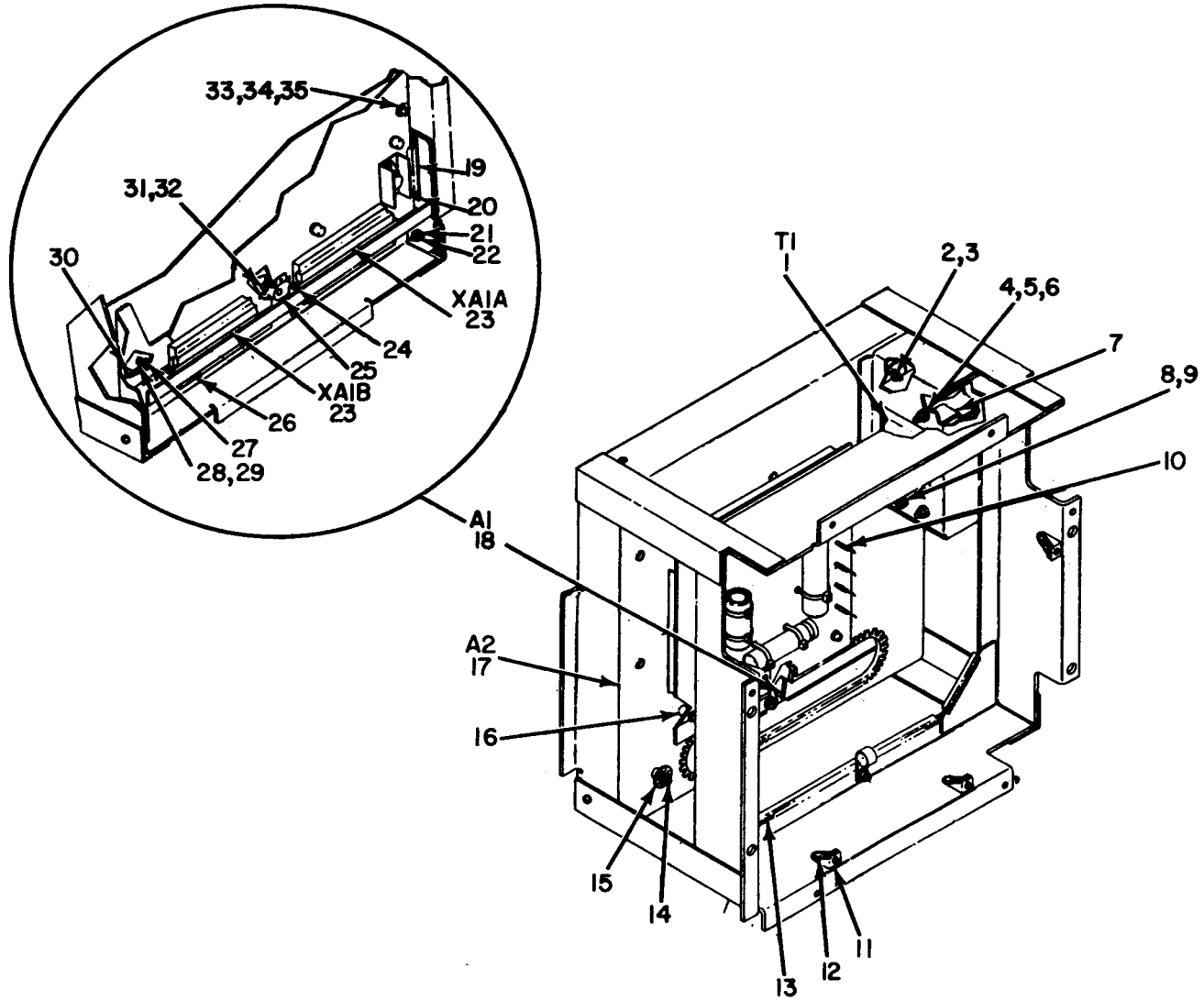
Figure 4. Panel Assembly, Front, Parts Breakdown (Sheet 2 of 2).



SECTION II (1) ILLUSTRATION		(2)	(3)	(4)	(5)	(6)	(7)	(8)
(A) FIG NO	(B) ITEM NO	SMR CODE	NATIONAL STOCK NUMBER	PART NUMBER	FSCM	DESCRIPTION	USABLE ON CODE U/M	QTY INC IN UNIT
4	1	PAHZZ	5930-00-655-1515	MS35058-23	96906	SWITCH, TOGGLE	EA	40
4	2	XDHZZ		841148-2	80249	SWITCH, ROTARY	EA	1
4	3	PAHZZ	5930-00-655-1513	MS35058-21	96906	SWITCH, TOGGLE	EA	2
4	4	PAHZZ	5930-00-538-1266	A14164	06840	SWITCH, PUSH	EA	1
4	5	PAHZZ	5930-00-655-1521	MS35058-29	96906	SWITCH, TOGGLE	EA	1
4	6	PAHZZ	5930-00-655-1575	MS35059-22	96906	SWITCH, TOGGLE	EA	1
4	7	PAHZZ	5310-00-436-7144	AN960XC6	88044	WASHER, FLAT	EA	3
4	8	PAHZZ	5310-00-224-0747	MS35338-136B	96906	WASHER, LOCK	EA	2
4	9	PAHZZ	5305-00-448-6547	MS51957-27B	96906	SCREW, MACHINE	EA	2
4	10	PAOZZ	5355-00-721-4301	S775-3	75376	KNOB	EA	8
4	11	PAHZZ	5905-00-646-5957	RV4NAYSBI03A	81349	RESISTOR, VARIABLE	EA	7
4	12	XDOZZ		S750-3LBB	75376	KNOB	EA	1
4	13	XDHZZ		10353A0832	06540	HANDLE, BOW	EA	2
4	14	XDHZZ	5940-00-552-9092	761	79963	TERMINAL, LUG	EA	4
4	15	PAHZZ	5905-00-542-8058	RV4NAYSB504A	81349	RESISTOR, VARIABLE	EA	1
4	16	PAHZZ	5940-00-082-4745	SE109D02	81349	TERMINAL, STUD	EA	2
4	17	PAHZZ	5935-00-436-8592	94-62548-33	02660	CONNECTOR	EA	1
4	18	PAHZZ	5310-00-224-0746	MS35338-135B	96906	WASHER, LOCK	EA	6
4	19	PAHZZ	5935-00-843-9008	UG-1094A/U	81349	CONNECTOR	EA	9
4	20	PAHZZ	5940-00-058-4544	639	79963	TERMINAL, LUG	EA	6
4	21	PAHZZ	5305-00-150-3425	MS51957-46B	96906	SCREW, MACHINE	EA	1
4	22	PAHZZ	5310-00-982-6814	MS21044C08	96906	NUT SLFLKG, HEX	EA	1
4	23	PAHZZ	5340-00-969-6501	NAS1397R7	80205	CLAMP, LOOP	EA	1
4	24	PAHZZ	5305-00-242-7275	MS51957-15B	96906	SCREW, MACHINE	EA	4
4	25	PAHZZ	5310-00-001-4858	AN960XC4	88044	WASHER, FLAT	EA	10
4	26	XDHZZ		651705	80249	PLATE IDENT	EA	1
4	27	XDHHH		522468	80249	PANEL, FRONT	EA	1
4	28	PAOZZ	5920-00-246-2187	FM03250V1/28	81349	FUSE, CARTRIDGE	EA	1
4	29	PAHZZ	5920-00-459-4508	342U152	36555	FUSEHOLDER, BLOCK	EA	1
4	30	PAHZZ	5935-00-850-6522	MS3112E14-5P	96906	CONNECTOR, RCPT, ELEC	EA	1
4	31	PAHZZ	5305-00-465-6745	MS51957-16B	96906	SCREW, MACHINE	EA	10
4	32	PAHZZ	6210-00-995-9734	95-0463-0935-211	72619	LIGHT, INDICATOR	EA	1
4	33	PAHZZ	6210-00-246-5888	95-0935	72619	LENS, INDICATO	EA	1
4	34	PAHZZ	6240-00-682-3411	M15098-10-002	81349	LAMP, GLOW	EA	1
4	35	XDHZZ		16022A2	06540	FERRULE	EA	4
4	36	PAHZZ	5915-00-993-6398	2JX83	56289	FILTER, RADIO	EA	2
4	37	XDHZZ		HU640513-16ST	02875	CASE, FILTER BOX	EA	1
4	38	PAHZZ	5320-00-117-6814	MS20470AD3-3	96906	RIVET, SOLID	EA	8
4	39	XDHZZ		MF6001-04	75237	NUT, SELFLOCKIN	EA	4
4	40	PAHZZ	5310-00-933-8119	MS35338-137	96906	WASHER, LOCK	EA	4

SECTION II (1) ILLUSTRATION		(2)	(3)	(4)	(5)	(6)	(7)	(8)
FIG NO	(B) ITEM NO	SMR CODE	NATIONAL STOCK NUMBER	PART NUMBER	FSCM	DESCRIPTION	USABLE ON CODE U/M	QTY INC IN UNIT
4	41	PAHZZ	5305-00-054-6670	MS51957-45	96906	SCREW, MACHINE	EA	4
4	42	PAHZZ	5310-00-934-9748	MS35649-244	96906	NUT, SELFLOCKIN	EA	8
4	43	PAHZZ	5310-00-933-8118	MS35338-135	96906	WASHER, LOCK	EA	8
4	44	PAHZZ	5305-00-231-9808	MS51957-19B	96906	SCREW, MACHINE	EA	4
4	45	XDHZZ		907-99	25936	METER, ELECTRICAL	EA	1
4	46	XDHZZ		147-4-032BRASSHT	79963	TERMINAL, LUG	EA	2



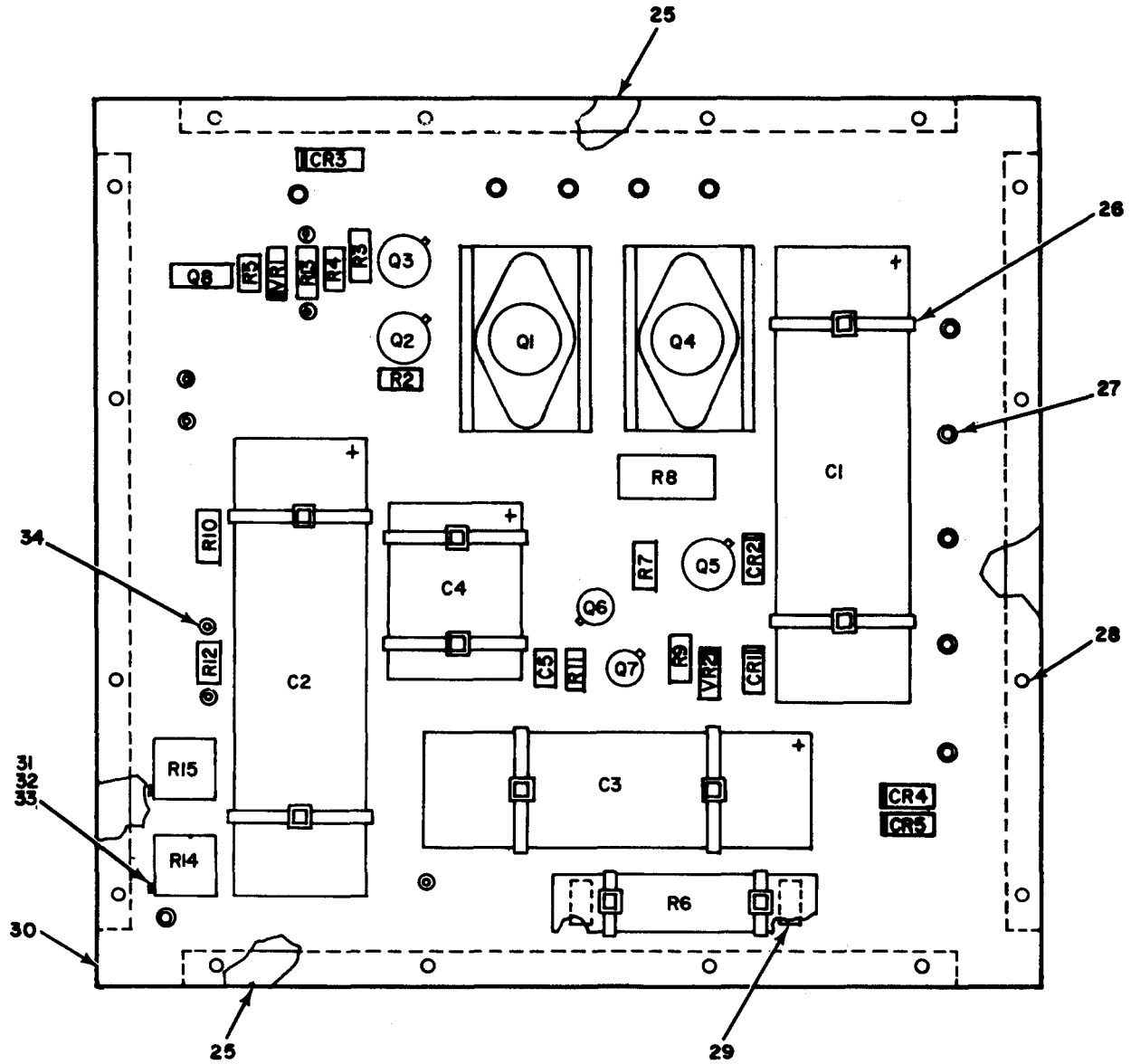


ELIHR004

Figure 5. Chassis, Elec -Mech.

SECTION II (1) ILLUSTRATION		(2)	(3)	(4)	(5)	(6)	(7)	(8)
(A) FIG NO	(B) ITEM NO	SMR CODE	NATIONAL STOCK NUMBER	PART NUMBER	FSCM	DESCRIPTION	USABLE ON CODE U/M	QTY INC IN UNIT
						GROUP 0102 CHASSIS, ELEC-MECH		
5	1	PAHZZ	5950-00-469-3716	890578	80249	TRANSFORMER, POWER	EA	1
5	2	PAHZZ	5305-00-054-6654	MS51957-30	96906	SCREW, MACHINE	EA	2
5	3	PAHZZ	5310-00-930-5029	RM52LHA972-5-62	72962	NUT-CLIP, FLOATING	EA	2
5	4	PAHZZ	5310-00-866-4638	LK832-2	46384	NUT, SELFLOCKIN	EA	2
5	5	PAHZZ	5305-00-054-6670	MS51957-45	96906	SCREW, MACHINE	EA	3
5	6	PAHZZ	5310-00-685-3744	AN960C8	88044	WASHER, FLAT	EA	2
5	7	XDHZZ		522469	80249	BRACKET, TRANSFORMER	EA	1
5	8	PAHZZ	5305-00-054-5648	MS51957-14	96906	SCREW, MACHINE	EA	1
5	9	PAHZZ	5310-00-982-4999	MS21044C04	96906	NUT, SELFLOCKIN	EA	5
5	10	XDHZZ		60804-1	00779	CONTACT, ELECTRICAL	EA	70
5	11	PAHZZ	5310-00-816-3504	MF6001-3	75237	NUT, SELFLOCKIN	EA	4
5	12	PAHZZ	5320-00-117-6815	MS20470AD3-4	96906	RIVET, SOLID	EA	8
5	13	PAHZZ	5325-00-074-3301	MS21266-2N	96906	GROMMET, NONMETALLIC	EA	1
5	14	XBHZZ		SE26-1	81349	TERMINAL STUD	EA	1
5	15	PAHZZ	5305-00-054-6672	MS51957-47	96906	SCREW, MACHINE	EA	1
5	16	XDHZZ		9556CSS0632-7	06540	POST ELEC MECH	EA	5
5	17	XDHZZ		121980-1	80249	POWER SUPPLY	EA	1
5	18	XDHZZ		121979-1	80249	LOGIC CIRCUIT CARD	EA	1
5	19	PAHZZ	5865-00-230-4612	35-1S2-4-3	18915	HOLDER, CIRCUIT CARD	EA	1
5	20	XDHZZ	5320-00-952-7864	MS16535-13	96906	RIVET, TUBULAR	EA	4
5	21	XDHZZ		750371	80249	BUSHING	EA	2
5	22	PAHZZ	5305-00-054-6655	MS51957-31	96906	SCREW, MACHINE	EA	2
5	23	PAHZZ	5935-00-759-4810	3-582151-4	00779	CONNECTO	EA	2
5	24	PAHZZ	5305-00-054-5651	MS51957-17	96906	SCREW, MACHINE	EA	4
5	25	XDHZZ		280060	80249	CAMBER	EA	1
5	26	PAHZZ	5999-00-068-4591	66009-2LP	00779	CONTACT, ELEC	EA	70
5	27	XDHZZ		522470	80249	LOCK, CARD RACK	EA	1
5	28	PAHZZ	5310-00-982-6813	MS21044C06	96906	NUT, SELFLOCKIN	EA	3
5	29	PAHZZ	5320-00-117-6826	MS20470AD4-4	96906	RIVET, SOLID	EA	1
5	30	PAHZZ	5307-00-822-2461	NCS6-2-12	07886	SCREW, SHOULDER	EA	1
5	31	PAHZZ	5305-00-715-1053	810327	80249	SCREW, MACHINE	EA	1
5	32	PAHZZ	5310-00-167-0812	AN960C10L	88044	WASHER, FLAT	EA	1
5	33	PAHZZ	5305-00-054-6651	MS51957-27	96906	SCREW, MACHINE	EA	11
5	34	PAHZZ	5310-00-929-6395	MS35338-136	96906	WASHER, LOCK	EA	11
5	35	PAHZZ	5310-00-531-9514	AN960C6	88044	WASHER, FLAT	EA	14





NOTE: FOR COMPLETE REFERENCE DESIGNATION  
PREFIX WITH A2

ELIHR007

Figure 6. Power Supply, Circuit Card Assembly (Sheet 1 of 2).

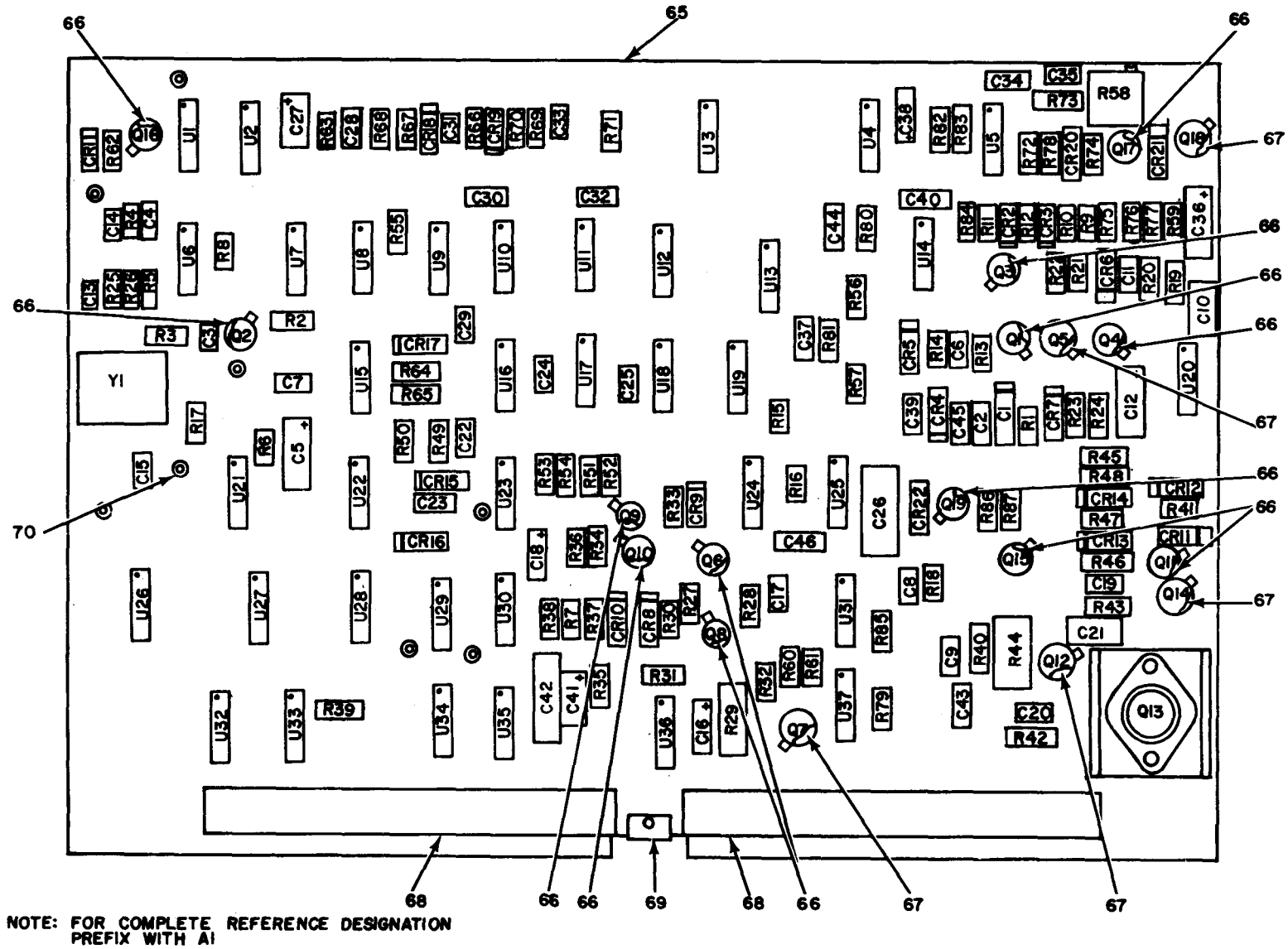
REF DES	ITEM NO	REF DES	ITEM NO	REF DES	ITEM NO
C1	1	Q3	8	R8	17
C2	1	Q4	7	R9	18
C3	2	Q5	8	R10	19
C4	3	Q6	9	R11	20
C5	4	Q7	9	R12	21
CR1	5	Q8	10	R13	21
CR2	5	R2	11	R14	22
CR3	6	R3	12	R15	22
CR4	5	R4	13	VR1	23
CR5	5	R5	14	VR2	24
Q1	7	R6	15		
Q2	8	R7	16		

ELIHR008

Figure 6. Power Supply, Circuit Card Assembly (Sheet 2 of 2).



SECTION II (1) ILLUSTRATION		(2)	(3)	(4)	(5)	(6)	(7)	(8)
(A) FIG NO	(B) ITEM NO	SMR CODE	NATIONAL STOCK NUMBER	PART NUMBER	FSCM	DESCRIPTION	USABLE ON CODE U/M	QTY INC IN UNIT
GROUP 010201 POWER SUPPLY, CIRCUIT CARD ASSEMBLY								
6	1	PAHZZ	5910-00-481-5902	39D317F150HS4	56289	CAPACITOR, FIXE	EA	2
6	2	PAHZZ	5910-00-136-6948	39D258G015GP4	56289	CAPACITOR, FIXE	EA	1
6	3	PAHZZ	5910-00-089-3043	39D128G010HE4	56289	CAPACITOR, FIXE	EA	1
6	4	PAHZZ	5910-00-108-7290	CK13BX103K	81349	CAPACITOR, FIXE	EA	1
6	5	PAHZZ	5961-00-957-6865	JAN1N3611	81349	SEMICONDUCTOR	EA	4
6	6	PAHZZ	5961-00-842-9864	JAN1N914	81349	SEMICONDUCTOR	EA	1
6	7	XDHZZ		40372	86684	TRANSISTOR	EA	2
6	8	PAHZZ	5961-00-050-7499	JAN2N2219	81349	TRANSISTOR	EA	3
6	9	PAHZZ	5961-00-226-8584	JAN2N2222	81349	TRANSISTOR	EA	2
6	10	XDHZZ		MCR106-1	04713	TRANSISTOR	EA	1
6	11	PAHZZ	5905-00-106-3666	RCR07G103JM	81349	RESISTOR, FIXE	EA	1
6	12	PAHZZ	5905-00-141-0594	RCR20G622JS	81349	RESISTOR, FIXE	EA	1
6	13	PAHZZ	5905-00-126-6696	RCR07G751JS	81349	RESISTOR, FIXE	EA	1
6	14	PAHZZ	5905-00-764-2772	RCR07G201JM	81349	RESISTOR, FIXE	EA	1
6	15	PAHZZ	5905-00-965-5548	RW68V6R8	81349	RESISTOR, FIXED, WIRE	EA	1
6	16	PAHZZ	5905-00-726-9758	RCR20G101JM	81349	RESISTOR, FIXE	EA	1
6	17	PAHZZ	5905-00-249-4190	RCR42GF562J	81349	RESISTOR, FIXED	EA	1
6	18	PAHZZ	5905-00-108-6922	RCR20G151JS	81349	RESISTOR, FIXE	EA	1
6	19	PAHZZ	5905-00-764-2481	RCR07G561JM	81349	RESISTOR, FIXE	EA	1
6	20	PAHZZ	5905-00-106-1356	RCR07G152JS	81349	RESISTOR, FIXE	EA	1
6	21	PAHZZ	5905-00-141-0744	RCR07G562JS	81349	RESISTOR, FIXE	EA	2
6	22	PAHZZ	5905-00-880-0872	RT22C2P103	81349	RESISTOR, THERMAL	EA	2
6	23	PAHZZ	5961-00-995-2310	JAN1N752A	81349	SEMICONDUCTOR DEVIC	EA	1
6	24	PAHZZ	5961-00-847-5246	JAN1N746A	81349	SEMICONDUCTOR	EA	1
6	25	XDHZZ		522472	80249	STIFFENER, PRINTED	EA	4
6	26	PAHZZ	5975-00-111-3208	MS3367-5-9	96906	STRAP, RETAINING	EA	10
6	27	PAHZZ	5999-00-584-0830	60599-3	00779	PIN, PRINTED WIRING	EA	6
6	28	PAHZZ	5320-00-081-7418	305-1711-000	12012	RIVET, TUBULAR	EA	16
6	29	XDHZZ		681106	80249	PAD, INSULATOR	EA	2
6	30	XDHZZ		867037	80249	PRINTED WIRING	EA	1
6	31	PAHZZ	5305-00-012-0719	NAS1635-00-8	80205	SCREW, MACHINE	EA	4
6	32	PAHZZ	5310-00-804-0141	MS15795-801	96906	WASHER, FLAT	EA	8
6	33	XDHZZ	5310-00-105-4086	MS35650-314	96906	NUT, PLAIN, HEXAGON	EA	4
6	34	PAHZZ	5940-00-501-9419	1785-2	71279	TERMINAL, STUD	EA	6



ELIHRO09

Figure 7. Logic Circuit Card Assembly (Sheet 1 of 3).

REF. DES.	ITEM NO.	REF. DES.	ITEM NO.	REF. DES.	ITEM NO.	REF. DES.	ITEM NO.	REF. DES.	ITEM NO.	REF. DES.	ITEM NO.	REF. DES.	ITEM NO.	REF. DES.	ITEM NO.
C1	1	C16	9	C31	12	C46	2	CR15	17	Q8	20	R4	26	R19	36
C2	2	C17	7	C32	13	CR1	17	CR16	17	Q9	18	R5	27	R20	25
C3	3	C18	9	C33	12	CR2	17	CR17	17	Q10	20	R6	28	R21	29
C4	2	C19	5	C34	6	CR3	17	CR18	17	Q11	18	R7	28	R22	31
C5	4	C20	3	C35	5	CR4	17	CR19	17	Q12	21	R8	29	R23	37
C6	5	C21	4	C36	4	CR5	17	CR20	17	Q13	22	R9	30	R24	29
C7	5	C22	2	C37	14	CR6	17	CR21	17	Q14	21	R10	28	R25	31
C8	5	C23	7	C38	15	CR7	17	CR22	17	Q15	20	R11	31	R26	31
C9	2	C24	7	C39	2	CR8	17	Q1	18	Q16	20	R12	29	R27	38
C10	6	C25	2	C40	6	CR9	17	Q2	19	Q17	18	R13	32	R28	31
C11	7	C26	10	C41	4	CR10	17	Q3	20	Q18	21	R14	33	R29	39
C12	4	C27	11	C42	16	CR11	17	Q4	18	Q19	20	R15	25	R30	37
C13	8	C28	2	C43	2	CR12	17	Q5	21	R1	23	R16	31	R31	29
C14	2	C29	12	C44	2	CR13	17	Q6	20	R2	24	R17	34	R32	25
C15	8	C30	13	C45	2	CR14	17	Q7	21	R3	25	R18	35	R33	28

ELIHROIO

Figure 7. Logic Circuit Card Assembly (Sheet 2 of 3).

REF. DES.	ITEM NO.	REF. DES.	ITEM NO.	REF. DES.	ITEM NO.	REF. DES.	ITEM NO.	REF. DES.	ITEM NO.
R34	25	R54	29	R74	29	U7	56	U27	59
R35	40	R55	29	R75	32	U8	56	U28	57
R36	41	R56	46	R76	37	U9	58	U29	59
R37	37	R57	47	R77	29	U10	58	U30	62
R38	29	R58	48	R78	29	U11	58	U31	58
R39	29	R59	31	R79	29	U12	59	U32	63
R40	25	R60	25	R80	29	U13	58	U33	63
R41	29	R61	31	R81	49	U14	58	U34	63
R42	31	R62	31	R82	52	U15	57	U35	63
R43	42	R63	49	R83	53	U16	60	U36	63
R44	43	R64	28	R84	29	U17	56	U37	56
R45	29	R65	29	R85	54	U18	56	Y1	64
R46	32	R66	50	R86	55	U19	57		
R47	29	R67	28	R87	29	U20	58		
R48	44	R68	29	U1	56	U21	57		
R49	45	R69	50	U2	56	U22	57		
R50	28	R70	28	U3	57	U23	56		
R51	29	R71	29	U4	58	U24	61		
R52	29	R72	51	U5	58	U25	58		
R53	28	R73	25	U6	56	U26	56		

ELIHROI

Figure 7. Logic Circuit Card Assembly (Sheet 3 Of 3)

SECTION II (1) ILLUSTRATION		(2)	(3)	(4)	(5)	(6)	(7)	(8)
FIG NO	ITEM NO	SMR CODE	NATIONAL STOCK NUMBER	PART NUMBER	FSCM	DESCRIPTION	USABLE ON CODE U/M	QTY INC IN UNIT
GROUP 010202 LOGIC CIRCUIT CARD ASSEMBLY								
7	1	PAHZZ	5910-00-464-9859	CK14BR224K	81349	CAPACITOR, FIXED, CER	EA	1
7	2	PAHZZ	5910-00-108-7290	CK13BX103K	81349	CAPACITOR, FIXE	EA	12
7	3	PAHZZ	5910-00-105-2045	CK12BX222K	81349	CAPACITOR, FIXE	EA	2
7	4	PAHZZ	5910-00-992-3238	M39003-01-2178	81349	CAPACITOR, FIXE	EA	5
7	5	PAHZZ	5910-00-106-7037	CK12BX102K	81349	CAPACITOR, FIXE	EA	5
7	6	PAHZZ	5910-00-471-5555	CM09FD101FP3	81349	CAPACITOR, FIXE	EA	3
7	7	PAHZZ	5910-00-050-5299	CK12BX471K	81349	CAPACITOR, FIXE	EA	4
7	8	PAHZZ	5910-00-112-3476	CK12BX221K	81349	CAPACITOR, FIXE	EA	2
7	9	PAHZZ	5910-00-113-5475	M39003-01-3006	81349	CAPACITOR, FIXE	EA	2
7	10	PAHZZ	5910-00-815-6881	CP09AKC223K3	81349	CAPACITOR, FIXEDPPR	EA	1
7	11	PAHZZ	5910-00-029-4819	M39003/01-2092	81349	CAPACITOR, FIXE	EA	1
7	12	PAHZZ	5910-00-111-8525	CK12BX101K	81349	CAPACITOR, FIXE	EA	3
7	13	XDHZZ		CM10ED820FP3	81349	CAPACITOR, FIXE	EA	2
7	14	XDHZZ		K472FK50J	05397	CAPACITOR, FIXE	EA	1
7	15	PAHZZ	5910-00-069-1378	M39003-01-2094	81349	CAPACITOR, FIXE	EA	1
7	16	XDHZZ		CL65CF271MP3	81349	CAPACITOR	EA	1
7	17	PAHZZ	5961-00-958-4837	507521-1	96214	SEMICONDUCTOR	EA	22
7	18	PAHZZ	5961-00-925-3777	2N2907A	81349	TRANSISTOR	EA	5
7	19	PAHZZ	5961-00-118-4775	2N4852	04713	TRANSISTOR	EA	1
7	20	PAHZZ	5961-00-226-8584	JAN2N2222	81349	TRANSISTOR	EA	7
7	21	PAHZZ	5961-00-050-7499	JAN2N2219	81349	TRANSISTOR	EA	5
7	22	PAHZZ	5961-00-497-9132	40372	02735	TRANSISTOR	EA	1
7	23	PAHZZ	5905-00-232-3209	RNC55K1333FS	81349	RESISTOR, FIXED, FILM	EA	1
7	24	PAHZZ	5905-00-758-5223	RCR07G151JM	81349	RESISTOR, FIXE	EA	1
7	25	PAHZZ	5905-00-141-1183	RCR07G101JS	81349	RESISTOR, FIXE	EA	8
7	26	PAHZZ	5905-00-734-1044	RCR07G470JM	81349	RESISTOR, FIXE	EA	1
7	27	PAHZZ	5905-00-120-9154	RCR07G471JS	81349	RESISTOR, FIXE	EA	1
7	28	PAHZZ	5905-00-114-0711	RCR07G472JM	81349	RESISTOR, FIXE	EA	8
7	29	PAHZZ	5905-00-106-3666	RCR07G103JS	81349	RESISTOR, FIXE	EA	24
7	30	PAHZZ	5905-00-772-9398	RCR07G750JM	81349	RESISTOR, FIXE	EA	1
7	31	PAHZZ	5905-00-110-7620	RCR07G102JS	81349	RESISTOR, FIXE	EA	10
7	32	PAHZZ	5905-00-105-7764	RCR07G222JS	81349	RESISTOR, FIXED, COMP	EA	3
7	33	PAHZZ	5905-00-734-1036	RCR07G332JM	81349	RESISTOR, FIXE	EA	1
7	34	PAHZZ	5905-00-228-5506	RCR07G622JS	81349	RESISTOR, FIXE	EA	1
7	35	PAHZZ	5905-00-728-6141	RCR07G223JM	81349	RESISTOR, FIXE	EA	1
7	36	PAHZZ	5905-00-965-9088	RN55D6191F	81349	RESISTOR, FIXED, FILM	EA	1
7	37	PAHZZ	5905-00-817-7971	RC07GF100J	81349	RESISTOR, FIXE	EA	4
7	38	PAHZZ	5905-00-135-6046	RCR07G681JS	81349	RESISTOR, FXD, CMPSN	EA	1
7	39	PAHZZ	5905-00-257-0926	RC42GF332J	81349	RESISTOR, FIXE	EA	1

SECTION II (1) ILLUSTRATION		(2)	(3)	(4)	(5)	(6)	(7)	(8)
(A) FIG NO	(B) ITEM NO	SMR CODE	NATIONAL STOCK NUMBER	PART NUMBER	FSCM	DESCRIPTION	USABLE ON CODE U/M	QTY INC IN UNIT
7	40	PAHZZ	5905-00-111-4744	RCR20G512JS	81349	RESISTOR	EA	1
7	41	PAHZZ	5905-00-106-1356	RCR07G152JM	81349	RESISTOR	EA	1
7	42	PAHZZ	5905-00-228-5506	RCR07G622JS	81349	RESISTOR, FIXE	EA	1
7	43	PAHZZ	5905-00-279-1945	RC42GF180J	81349	RESISTOR, FIXE	EA	1
7	44	PAHZZ	5905-00-135-3974	RCR07G431JS	81349	RESISTOR, FIXE	EA	1
7	45	PAHZZ	5905-00-114-5344	RCR07G184JS	81349	RESISTOR, FIXE	EA	1
7	46	PAHZZ	5905-00-952-7223	RN55D1782F	81349	RESISTOR, FIXED, FILM	EA	1
7	47	PAHZZ	5905-00-912-6474	RN55D2051F	81349	RESISTOR, FIXED, FILM	EA	1
7	48	PAHZZ	5905-00-067-7338	RT22C2P502	81349	RESISTOR, THERMAL	EA	1
7	49	PAHZZ	5905-00-119-3504	RCR07G273JS	81349	RESISTOR	EA	2
7	50	PAHZZ	5905-00-733-1489	RN55D2742F	81349	RESISTOR, FIXED, FILM	EA	2
7	51	PAHZZ	5905-00-432-6384	RNC55K5621FS	81349	RESISTOR, FIXED, FILM	EA	1
7	52	PAHZZ	5905-00-115-8055	RCR07G393JM	81349	RESISTOR, FIXE	EA	1
7	53	PAHZZ	5905-00-141-1132	RCR07G752JS	81349	RESISTOR, FIXE	EA	1
7	54	PAHZZ	5905-00-935-8541	RCR20G301JS	81349	RESISTOR, FIXE	EA	1
7	55	PAHZZ	5905-00-104-8366	RCR07G5R1JS	81349	RESISTOR, FIXE	EA	1
7	56	PAHZZ	5960-00-865-4625	MC7400P	04713	INTEGRATED CIRCUI	EA	10
7	57	PAHZZ	5962-00-106-4282	ITI7473N	14433	INTEGRATED CIRCUI	EA	6
7	58	PAHZZ	5962-00-469-4953	MC74121P	04713	INTERIOR	EA	10
7	59	PAHZZ	5962-00-348-2715	M38510/00102BCB	04713	INTEGRATED CIRCUI	EA	3
7	60	PAHZZ	5962-00-256-0342	MC7410P	04713	INTERIOR	EA	1
7	61	PAHZZ	5962-00-229-8500	DM7405N	27014	INTEGRATED CIRCUI	EA	1
7	62	PAHZZ	5962-00-927-1568	SN7430N	01295	MICROCITCUI	EA	1
7	63	PAHZZ	5962-00-469-4961	MC74151P	04713	INTEGRATED CIRCUI	EA	5
7	64	PAHZZ	5955-00-050-3047	EE2A5GSV	32897	CRYSTAL UNIT, QUARTZ	EA	1
7	65	XDZZ		867036	80249	PRINTED WIRING	EA	1
7	66	PAHZZ	5999-00-484-5513	7717-18-N	13103	MOUNTING PAD	EA	13
7	67	PAHZZ	5895-00-159-9728	670078	80249	MOUNTING PAD	EA	5
7	68	PAHZZ	5935-00-689-6607	3-582152-9	00779	CONNECTO	EA	2
7	69	XDZZ		522471	80249	STOP, PLATE	EA	1
7	70	XDZZ		X1457-2	71279	TERMINAL, STUD	EA	8



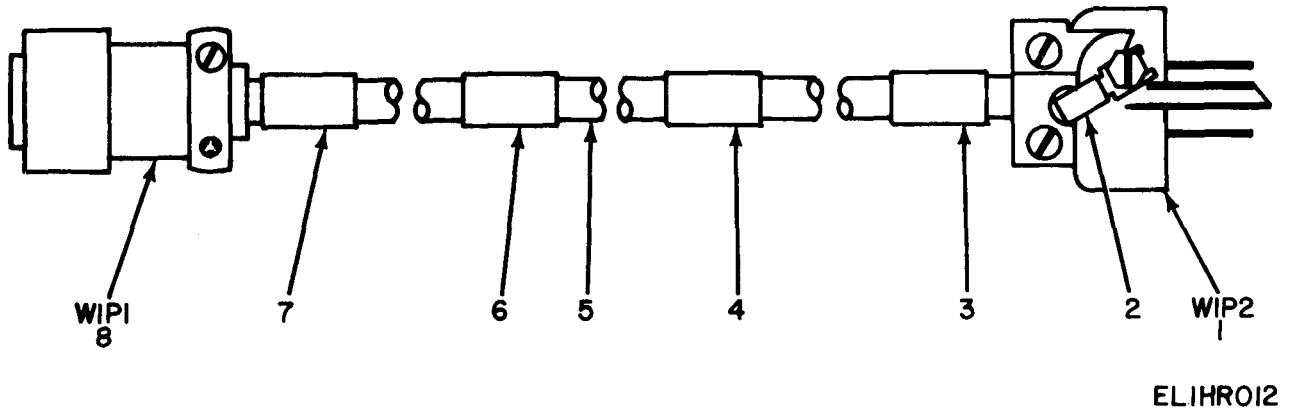


Figure 8. Cable Assembly, Power Electrical.



SECTION II (1) ILLUSTRATION		(2)	(3)	(4)	(5)	(6)	(7)	(8)
FIG NO	(B) ITEM NO	SMR CODE	NATIONAL STOCK NUMBER	PART NUMBER	FSCM	DESCRIPTION	USABLE ON CODE U/M	QTY INC IN UNIT
GROUP 02 CABLE ASSEMBLY, POWER ELECTRICAL								
8	1	PAHZZ	5935-00-843-7362	UP131M	81349	CONNECTOR, PLU	EA	1
8	2	XDHZZ		41821	00779	TERMINAL, LUG	EA	1
8	3	XDHZZ		ST605716P2	80249	SLEEVE, MARKER, CABLE	EA	1
8	4	XDHZZ		ST650716-117740	80249	SLEEVE, MARKER, CABLE	EA	1
8	5	PAHZZ	6145-00-676-7691	THOF3	81349	CABLE, POWE	EA	1
8	6	XDHZZ		ST650716W1	80249	SLEEVE, MARKER, CABLE	EA	1
8	7	XDHZZ		ST650716P1	80249	SLEEVE, MARKER, CABLE	EA	1
8	8	PAHZZ	5935-00-781-8765	MS3116F14-5S	96906	CONNECTOR, PLU	EA	1

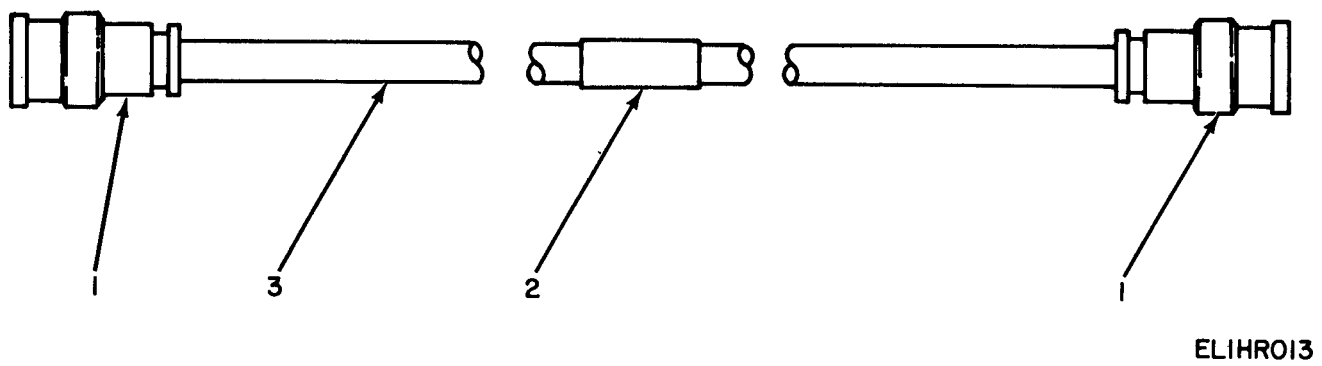


Figure 9. Cable Assembly, Radio Frequency.

SECTION II (1) ILLUSTRATION		(2)	(3)	(4)	(5)	(6)	(7)	(8)
FIG NO	(A) ITEM NO	SMR CODE	NATIONAL STOCK NUMBER	PART NUMBER	FSCM	DESCRIPTION	USABLE ON CODE U/M	QTY INC IN UNIT
GROUP 03 CABLE ASSEMBLY, RADIO FREQUENCY								
9	1	PAHZZ	5935-00-402-3538	UG260EU	80058	CONNECTOR, PLU	EA	2
9	2	XDHZZ		ST650712-117743	80249	SLEEVE, MARKER, CABLE	EA	1
9	3	XDHZZ		RG62AU	81349	CABLE, RADIO	EA	1

NATIONAL STOCK NUMBER AND PART NUMBER INDEX  
 NOTE: LATEST NATION INCLUDED AT END OF INDEX

STOCK NUMBER	FIGURE NO	ITEM NO	STOCK NUMBER	FIGURE NO	ITEM NO
5310-00-001-4858	4	25	5962-00-256-0342	7	60
5305-00-012-0719	6	31	5905-00-257-0926	7	39
5910-00-029-4819	7	11	5905-00-279-1945	7	43
5955-00-050-3047	7	64	5962-00-348-2715	7	59
5910-00-050-5299	7	7	5935-00-402-3538	9	1
5961-00-050-7499	6	8			
5961-00-050-7499	7	21			
5305-00-054-5648	5	8	5905-00-432-6384	7	51
5305-00-054-5651	5	24	5310-00-436-7144	4	7
5305-00-054-6651	5	33	5935-00-436-8592	4	17
5305-00-054-6654	5	2	5305-00-448-6547	4	9
5305-00-054-6655	5	22	5920-00-459-4508	4	29
5305-00-054-6670	5	5	5910-00-464-9859	7	1
5305-00-054-6670	4	41	5305-00-465-6745	4	31
5305-00-054-6672	5	15	5950-00-469-3716	5	1
5940-00-058-4544	4	20	5962-00-469-4953	7	58
5305-00-059-3660	2	3	5962-00-469-4961	7	63
5905-00-067-7338	7	48	5305-00-470-5475	2	5
5910-00-069-1378	7	15	5910-00-471-5555	7	6
5325-00-074-3301	5	13	5910-00-481-5902	6	3
5320-00-081-7418	6	28	5999-00-484-5513	7	66
5940-00-082-4745	4	16	5961-00-497-9132	7	22
5910-00-089-3043	6	5	5940-00-501-9419	6	34
5905-00-104-8366	7	55	5310-00-531-9514	5	35
5910-00-105-2045	7	3	5930-00-538-1266	4	4
5310-00-105-4086	6	33	5905-00-542-8058	4	15
5905-00-105-7764	7	32	5940-00-552-9092	4	14
5905-00-106-1356	6	20	5999-00-584-0830	6	27
5905-00-106-3666	7	28	5905-00-646-5957	4	11
5962-00-106-4282	7	57	5930-00-655-1513	4	3
5910-00-106-7037	7	5	5930-00-655-1515	4	1
5905-00-108-6922	6	18	5930-00-655-1521	4	5
5910-00-108-7290	6	6	5930-00-655-1575	4	6
5910-00-108-7290	7	2	6145-00-676-7691	8	5
5905-00-110-7620	3	6	6240-00-682-3411	4	34
5905-00-110-7620	7	31	5310-00-685-3744	5	6
5975-00-111-3208	6	26	5935-00-689-6607	7	68
5905-00-111-4744	7	40	5305-00-715-1053	5	31
5910-00-111-8525	7	12	5355-00-721-4301	4	10
5910-00-112-3476	7	8	5905-00-726-9758	6	16
5910-00-113-5475	7	9	5905-00-728-6141	7	35
5905-00-114-5344	7	45	5905-00-733-1489	7	50
5905-00-115-8055	3	4			
5320-00-117-6814	4	38	5905-00-734-1036	7	33
5320-00-117-6815	5	12	5905-00-734-1044	7	26
5320-00-117-6826	5	29	5905-00-758-5223	7	24
5961-00-118-4775	7	19	5935-00-759-4810	5	23
5905-00-120-9152	3	5	5905-00-764-2481	6	19
5905-00-120-9154	3	7	5905-00-764-2772	6	14
5905-00-120-9154	7	27	5905-00-772-9398	7	30
5905-00-126-6696	6	13	5935-00-781-8765	8	8
5905-00-135-3974	7	44	5310-00-804-0141	6	32
5910-00-136-6948	6	4	5910-00-815-6881	7	10
5905-00-141-0594	6	12	5310-00-816-3504	5	11
5905-00-141-0744	6	21	5905-00-817-7971	7	37
5905-00-141-1131	3	2	5307-00-822-2461	5	30
5905-00-141-1132	7	53	5961-00-842-9864	6	2
5905-00-141-1183	7	25	5935-00-843-7362	8	1
5305-00-150-3425	4	21	5935-00-843-9008	4	19
			5961-00-847-5246	6	24
5895-00-159-9728	7	67	5935-00-850-6522	4	30
5310-00-160-9817	2	6	5962-00-865-4625	7	56
			5310-00-866-4638	4	4
5310-00-167-0801	2	4	5905-00-880-0872	6	22
5310-00-167-0812	5	32	5905-00-912-6474	7	47
5905-00-171-2005	3	1	5940-00-920-3339	3	3
5310-00-224-0746	4	18	5961-00-925-3777	7	18
5310-00-224-0747	4	8	5962-00-927-1568	7	62
5961-00-226-8584	6	9	5310-00-929-6395	5	34
5961-00-226-8584	7	20	5310-00-933-8118	4	43
5905-00-228-5506	7	34	5310-00-933-8119	4	40
5905-00-228-5506	7	42	5310-00-934-9748	4	42
5962-00-229-8500	7	61	5905-00-935-8541	7	54
5865-00-230-4612	5	19	5905-00-952-7223	7	46
5305-00-231-9808	4	44	5320-00-952-7864	5	20
5905-00-232-3209	7	23	5961-00-957-6865	6	1
5305-00-242-7275	4	24	5961-00-958-4837	7	17
5920-00-246-2187	4	28	5905-00-965-5548	6	15
6210-00-246-5888	4	33	5905-00-965-9088	7	36
5905-00-249-4190	6	17	5340-00-969-6501	4	23

## NATIONAL STOCK NUMBER AND PART NUMBER INDEX

STOCK NUMBER	FIGURE NO	ITEM NO	STOCK NUMBER	FIGURE NO	ITEM NO		
5310-00-982-4999	5	9	5915-00-993-6398	4	36		
5310-00-982-6813	5	28	5961-00-995-2310	6	23		
5310-00-982-6814	4	22	6210-00-995-9734	4	32		
			6625-01-040-8978	1	3		
5910-00-992-3238	7	4					
PART NUMBER	FSCM	FIG NO	ITEM NO	PART NUMBER	FSCM	FIG NO	ITEM NO
AN960C10	88044	2	4	MS51957-17	96906	5	24
AN960C10L	88044	5	32	MS51957-19B	96906	4	44
AN960C6	88044	5	35	MS51957-27	96906	5	33
AN960C8	88044	5	6	MS51957-27B	96906	4	9
AN960XC10	88044	2	6	MS51957-30	96906	5	2
AN960XC4	88044	4	25	MS51957-31	96906	5	22
AN960XC6	88044	4	7	MS51957-45	96906	5	5
A14164	16840	4	4	MS51957-45	96906	4	41
CK12BX101K	81349	7	12	MS51957-46B	96906	4	21
CK12BX102K	81349	7	5	MS51957-47	96906	5	15
CK12BX221K	81349	7	8	MS51958-63B	96906	2	5
CK12BX222K	81349	7	3	MS51958-64	96906	2	3
CK12BX471K	81349	7	7	M15098-01-002	81349	4	34
CK13BX103K	81349	6	6	M39003-01-2094	81349	7	15
CK13BX103K	81349	7	2	M39003-01-2178	81349	7	4
CK14BR224K	81349	7	1	M39003-01-3006	81349	7	9
CL65CF271MP3	81349	7	16	M39003/01-2092	81349	7	11
CM09FD101FP3	81349	7	6	NAS1397R7	80205	4	23
CM10ED820FP3	81349	7	13	NAS1635-00-8	80205	6	31
CP09A1KC223K3	81349	7	10	NCS6-2-12	07886	5	30
DM7405N	27014	7	61				
DI00	06090	3	3				
EE2A5GSV	32897	7	64	RCR07G101JS	81349	7	25
HU640513-16ST	02875	4	37	RCR07G102JS	81349	3	6
ITI7473N	4433	7	57	RCR07G103JM	81349	6	11
JAN1N3611	81349	6	1	RCR07G103JS	81349	7	29
JAN1N746A	81349	6	24	RCR07G151JM	81349	7	24
JAN1N752A	81349	6	23	RCR07G152JM	81349	7	41
JAN1N914	81349	6	2	RCR07G152JS	81349	6	20
JAN2N2219	81349	6	8	RCR07G184JS	81349	7	45
JAN2N2219	81349	7	21	RCR07G201JM	81349	6	14
JAN2N2222	81349	6	9	RCR07G222JS	81349	7	32
JAN2N2222	81349	7	20	RCR07G223JM	81349	7	35
K472FK50J	05397	7	14				
LKS832-2	46384	5	4	RCR07G274JS	81349	3	5
MCR106-1	04713	6	10	RCR07G332JM	81349	7	33
MC7400P	04713	7	56	RCR07G393JM	81349	7	52
MC7410P	04713	7	60	RCR07G393JS	81349	3	4
MS74121P	04713	7	58	RCR07G431JS	81349	7	44
MC74151P	04713	7	63	RCR07G470JM	81349	7	26
				RCR07G471JS	81349	3	7
MF6001-04	75237	4	39	RCR07G471JS	81349	7	27
MF6001-3	75237	5	11	RCR07G472JM	81349	7	29
MS15795-801	96906	6	32	RCR07G511JS	81349	7	55
MS16535-13	96906	5	20	RCR07G561JM	81349	6	19
MS20470AD3-3	96906	4	38	RCR07G562JS	81349	6	21
MS20470AD3-4	96906	5	12				
MS20470AD4-4	96906	5	29	RCR07G622JS	81349	7	42
MS21044C04	96906	5	9				
MS21044C06	96906	5	28	RCR07G750JM	81349	7	30
MS21044C08	96906	4	22	RCR07G751JS	81349	6	13
MS21266-2N	96906	5	13	RCR07G752JS	81349	7	53
MS3112E14-5P	96906	4	30	RCR07G910JS	81349	3	2
MS3116F14-5S	96906	8	8	RCR20G101JM	81349	6	16
MS3367-5-9	96906	6	26	RCR20G151JS	81349	6	18
MS35058-21	96906	4	3	RCR20G301JS	81349	7	54
MS35058-23	96906	4	1	RCR20G471JS	81349	3	1
MS35058-29	96906	4	5				
MS35059-22	96906	4	6	RCR20G622JS	81349	6	12
MS35338-135	96906	4	43	RCR42GF562J	81349	6	17
MS35338-135B	96906	4	18	RC42GF180J	81349	7	43
MS35338-136	96906	5	34	RC42GF332J	81349	7	39
MS35338-136B	96906	4	8				
MS35338-137	96906	4	40	RM52LHA972-5-62	72962	5	3
MS35649-244	96906	4	42	RNC55K1333FS	81349	7	23
MS35650-314	96906	6	33	RNC55K5621FS	81349	7	51
MS51957-14	96906	5	8	RN55D1782F	81349	7	46
MS51957-15B	96906	4	24	RN55D2051F	81349	7	47
MS51957-16B	96906	4	31	RN55D2742F	81349	7	50

TM11-6625-1711-24P-1  
SECTION IV  
NATIONAL STOCK NUMBER AND PART NUMBER INDEX

PART NUMBER	FSCM	FIG NO	ITEM NO	PART NUMBER	FSCM	FIG NO	ITEM NO
RN55D6191F	81349	7	36	305-1711-000	12012	6	28
RT22C2P103	81349	6	22				
RT22C2P502	81349	7	48	35-1S2-4-3	18915	5	19
RV4NAYS8103A	81349	4	11	39D128G010HE4	56289	6	5
RV4NAYS8504A	81349	4	15	39D258G015GP4	56289	6	4
RW68V6R8	81349	6	15	39D317F150HS4	56289	6	3
SE109D02	81349	4	16	40372	02735	7	22
SN7430N	01295	7	62	40372	86684	6	7
ST605716P2	80249	8	3	41821	00779	8	2
ST650712-117743	80249	9	2	507521-1	96214	7	17
ST650716-117740	80249	8	4	522468	80249	4	27
ST650716P1	80249	8	7	522469	80249	5	7
ST650716W1	80249	8	6	522470	80249	5	27
S750-3LBB	75376	4	12	522471	80249	7	69
S775-3	75376	4	10	522472	80249	6	25
THOF3	81349	8	5	60599-3	00779	6	27
				60804-1	00779	5	10
UG260EU	80058	9	1	639	79963	4	20
UP131M	81349	8	1	651705	80249	4	26
X1457-2	71279	7	70				
10353A0832	06540	4	13	670078	80249	7	67
117740	80249	1	3	681106	80249	6	29
117743	80249	1	2	750371	80249	5	21
121979-1	80249	5	18	761	79963	4	14
121980-1	80249	5	17	7717-18-N	13103	7	66
121986-1	80249	1	1	79M17	19178	2	2
121987-1	80249	2	7	810327	80249	5	31
147-4-U32BRASSHT	79963	4	46	841148-2	80249	4	2
16022A2	06540	4	35	867036	80249	7	65
1785-2	71279	6	34	867037	80249	6	30
2JX83	56289	4	36	890578	80249	5	1
2N2907A	81349	7	18	907-99	25936	4	45
2N4852	04713	7	19	94-62548-33	02660	4	17
202001-1	80249	2	1	95-0463-0935-211	72619	4	32
280060	80249	5	25	95-0935	72619	4	33
3-582151-4	00779	5	23	9556CSS0632-7	06540	5	16
3-582152-9	00779	7	68				

LATEST NATIONAL STOCK NUMBER ASSIGNMENTS

STOCK NUMBER	FIG. NO.	ITEM NO.
5999-00-068-4591	5	26
5905-00-106-1356	7	41
5905-00-114-0711	7	28
5905-00-119-3504	7	49
5905-00-135-6046	7	38
5310-00-930-5029	5	3

ADDITIONAL LATEST NATIONAL STOCK NUMBER ASSIGNMENTS

STOCK NUMBER	FIG. NO.	ITEM NO.
5905-00-106-3666	6	11
5905-00-115-8055	7	52

LATEST PART NUMBER ASSIGNMENTS

PART NUMBER	FSCM	FIG. NO.	ITEM NO.
FM03250V1/28	81349	4	28
M38510/00102BCB	04713	7	59
RCR07G102JS	81349	7	31
RCR07G273JS	81349	7	49
RCR07G622JS	81349	7	34
RCR07G681JS	81349	7	38
RCR20G512JS	81349	7	40
RC07GF100J	81349	7	37
RG62AU	81349	9	3
SE26-1	81349	5	14
UG-1094A/U	81349	4	19
342U152	36555	4	29
66009-2LP	00779	5	26

RECOMMENDED CHANGES TO EQUIPMENT TECHNICAL MANUALS



**SOMETHING WRONG WITH THIS MANUAL?**

THEN... JOT DOWN THE DOPE ABOUT IT ON THIS FORM, TEAR IT OUT, FOLD IT AND DROP IT IN THE MAIL!

FROM: (YOUR UNIT'S COMPLETE ADDRESS)

Commander  
Stateside Army Depot  
ATTN: AMSTA-US  
Stateside, N.J. 07703

DATE 10 July 1975

PUBLICATION NUMBER

TM 11-5840-340-20P

DATE

23 Jan 78

TITLE

Radar Set AN/PRC-76

BE EXACT... PIN-POINT WHERE IT IS

IN THIS SPACE TELL WHAT IS WRONG AND WHAT SHOULD BE DONE ABOUT IT:

PAGE NO.	PARA-GRAPH	FIGURE NO.	TABLE NO.
33			
44		19	
45			

For item 2, change the NSN to read: 5835-00-134-9186.

Reason: Accuracy.

Identify the cover on the junction box (item no. 5).

Reason: It is a separate item and is not called out on figure 19.

Add the cover of the junction box as an item in the listing for figure 19.

Reason: Same as above.

TEAR ALONG DOTTED LINE

TYPED NAME, GRADE OR TITLE, AND TELEPHONE NUMBER

SSG I. M. DeSpirito 999-1776

SIGN HERE:

*SSG I. M. DeSpirito*

DA FORM 2028-2  
1 AUG 74

P.S.--IF YOUR OUTFIT WANTS TO KNOW ABOUT YOUR MANUAL "FIND" MAKE A CARBON COPY OF THIS AND GIVE IT TO YOUR HEADQUARTERS.





RECOMMENDED CHANGES TO EQUIPMENT TECHNICAL MANUALS

# SOMETHING WRONG WITH THIS MANUAL?



THEN... JOT DOWN THE DOPE ABOUT IT ON THIS FORM, TEAR IT OUT, FOLD IT AND DROP IT IN THE MAIL!

FROM: (YOUR UNIT'S COMPLETE ADDRESS)

DATE

PUBLICATION NUMBER

TM 11-6625-1711-24P-1

DATE

12 Mar 80

TITLE

Test Set, Simulator AN/APM-245A

BE EXACT... PIN-POINT WHERE IT IS

PAGE NO.	PARA-GRAPH	FIGURE NO.	TABLE NO.

IN THIS SPACE TELL WHAT IS WRONG AND WHAT SHOULD BE DONE ABOUT IT:

TEAR ALONG DOTTED LINE

TYPED NAME, GRADE OR TITLE, AND TELEPHONE NUMBER

SIGN HERE:

FILL IN YOUR  
UNIT'S ADDRESS

FOLD BACK

DEPARTMENT OF THE ARMY

OFFICIAL BUSINESS

Commander  
US Army Communications and  
Electronics Materiel Readiness Command  
ATTN: DRSEL-ME-MQ  
Fort Monmouth, New Jersey 07703

FOLD BACK

TEAR ALONG DOTTED LINE

RECOMMENDED CHANGES TO EQUIPMENT TECHNICAL MANUALS



**SOMETHING WRONG WITH THIS MANUAL?**

THEN... JOT DOWN THE DOPE ABOUT IT ON THIS FORM, TEAR IT OUT, FOLD IT AND DROP IT IN THE MAIL!

FROM: (YOUR UNIT'S COMPLETE ADDRESS)

DATE

PUBLICATION NUMBER

TM 11-6625-1711-24P-1

DATE

12 Mar 80

TITLE

Test Set, Simulator AN/APM-245A

BE EXACT... PIN-POINT WHERE IT IS

PAGE NO.	PARA-GRAPH	FIGURE NO.	TABLE NO.

IN THIS SPACE TELL WHAT IS WRONG AND WHAT SHOULD BE DONE ABOUT IT:

TEAR ALONG DOTTED LINE

TYPED NAME, GRADE OR TITLE, AND TELEPHONE NUMBER

SIGN HERE:

FILL IN YOUR  
UNIT'S ADDRESS

FOLD BACK

DEPARTMENT OF THE ARMY

OFFICIAL BUSINESS

Commander  
US Army Communications and  
Electronics Materiel Readiness Command  
ATTN: DRSEL-ME-MQ  
Fort Monmouth, New Jersey 07703

FOLD BACK

TEAR ALONG DOTTED LINE

RECOMMENDED CHANGES TO EQUIPMENT TECHNICAL MANUALS



**SOMETHING WRONG WITH THIS MANUAL?**

THEN... JOT DOWN THE DOPE ABOUT IT ON THIS FORM, TEAR IT OUT, FOLD IT AND DROP IT IN THE MAIL!

FROM: (YOUR UNIT'S COMPLETE ADDRESS)

DATE

PUBLICATION NUMBER

TM 11-6625-1711-24P-1

DATE

12 Mar 80

TITLE

Test Set, Simulator AN/APM-245A

BE EXACT... PIN-POINT WHERE IT IS

IN THIS SPACE TELL WHAT IS WRONG AND WHAT SHOULD BE DONE ABOUT IT:

PAGE NO.	PARA-GRAPH	FIGURE NO.	TABLE NO.
----------	------------	------------	-----------

TEAR ALONG DOTTED LINE

TYPED NAME, GRADE OR TITLE, AND TELEPHONE NUMBER

SIGN HERE:

DA FORM 2028-2  
1 AUG 74

P.S.--IF YOUR OUTFIT WANTS TO KNOW ABOUT YOUR MANUAL "FIND" MAKE A CARBON COPY OF THIS AND GIVE IT TO YOUR HEADQUARTERS.

FILL IN YOUR  
UNIT'S ADDRESS

FOLD BACK

DEPARTMENT OF THE ARMY

OFFICIAL BUSINESS

Commander  
US Army Communications and  
Electronics Materiel Readiness Command  
ATTN: DRSEL-ME-MQ  
Fort Monmouth, New Jersey 07703

FOLD BACK

TEAR ALONG DOTTED LINE

RECOMMENDED CHANGES TO EQUIPMENT TECHNICAL MANUALS



**SOMETHING WRONG WITH THIS MANUAL?**

THEN... JOT DOWN THE DOPE ABOUT IT ON THIS FORM, TEAR IT OUT, FOLD IT AND DROP IT IN THE MAIL!

FROM: (YOUR UNIT'S COMPLETE ADDRESS)

DATE

PUBLICATION NUMBER

TM 11-6625-1711-24P-1

DATE

12 Mar 80

TITLE

Test Set, Simulator AN/APM-245A

BE EXACT... PIN-POINT WHERE IT IS

PAGE NO.

PARA-GRAPH

FIGURE NO.

TABLE NO.

IN THIS SPACE TELL WHAT IS WRONG AND WHAT SHOULD BE DONE ABOUT IT:

TEAR ALONG DOTTED LINE

TYPED NAME, GRADE OR TITLE, AND TELEPHONE NUMBER

SIGN HERE:

DA FORM 2028-2  
1 AUG 74

P.S.--IF YOUR OUTFIT WANTS TO KNOW ABOUT YOUR MANUAL "FIND" MAKE A CARBON COPY OF THIS AND GIVE IT TO YOUR HEADQUARTERS.

FILL IN YOUR  
UNIT'S ADDRESS



FOLD BACK

DEPARTMENT OF THE ARMY

OFFICIAL BUSINESS

Commander  
US Army Communications and  
Electronics Materiel Readiness Command  
ATTN: DRSEL-ME-MQ  
Fort Monmouth, New Jersey 07703

TEAR ALONG DOTTED LINE

FOLD BACK



RECOMMENDED CHANGES TO EQUIPMENT TECHNICAL MANUALS



**SOMETHING WRONG WITH THIS MANUAL?**

THEN... JOT DOWN THE DOPE ABOUT IT ON THIS FORM, TEAR IT OUT, FOLD IT AND DROP IT IN THE MAIL!

FROM: (YOUR UNIT'S COMPLETE ADDRESS)

DATE

PUBLICATION NUMBER

TM 11-6625-1711-24P-1

DATE

12 Mar 80

TITLE

Test Set, Simulator AN/APM-245A

BE EXACT... PIN-POINT WHERE IT IS

IN THIS SPACE TELL WHAT IS WRONG AND WHAT SHOULD BE DONE ABOUT IT:

PAGE NO.	PARA-GRAPH	FIGURE NO.	TABLE NO.
----------	------------	------------	-----------

TEAR ALONG DOTTED LINE

TYPED NAME, GRADE OR TITLE, AND TELEPHONE NUMBER

SIGN HERE:

FILL IN YOUR  
UNIT'S ADDRESS

FOLD BACK

DEPARTMENT OF THE ARMY

OFFICIAL BUSINESS

Commander  
US Army Communications and  
Electronics Materiel Readiness Command  
ATTN: DRSEL-ME-MQ  
Fort Monmouth, New Jersey 07703

FOLD BACK

TEAR ALONG DOTTED LINE

By Order of the Secretary of the Army

Official:

**E. C. MEYER**  
*General, United States Army*  
*Chief of Staff*

**J. C. PENNINGTON**  
*Major General, United States Army*  
*The Adjutant General*

**DISTRIBUTION:**

To be distributed in accordance with DA Form 12-36A, Organizational maintenance requirements for AN/APM-245.

